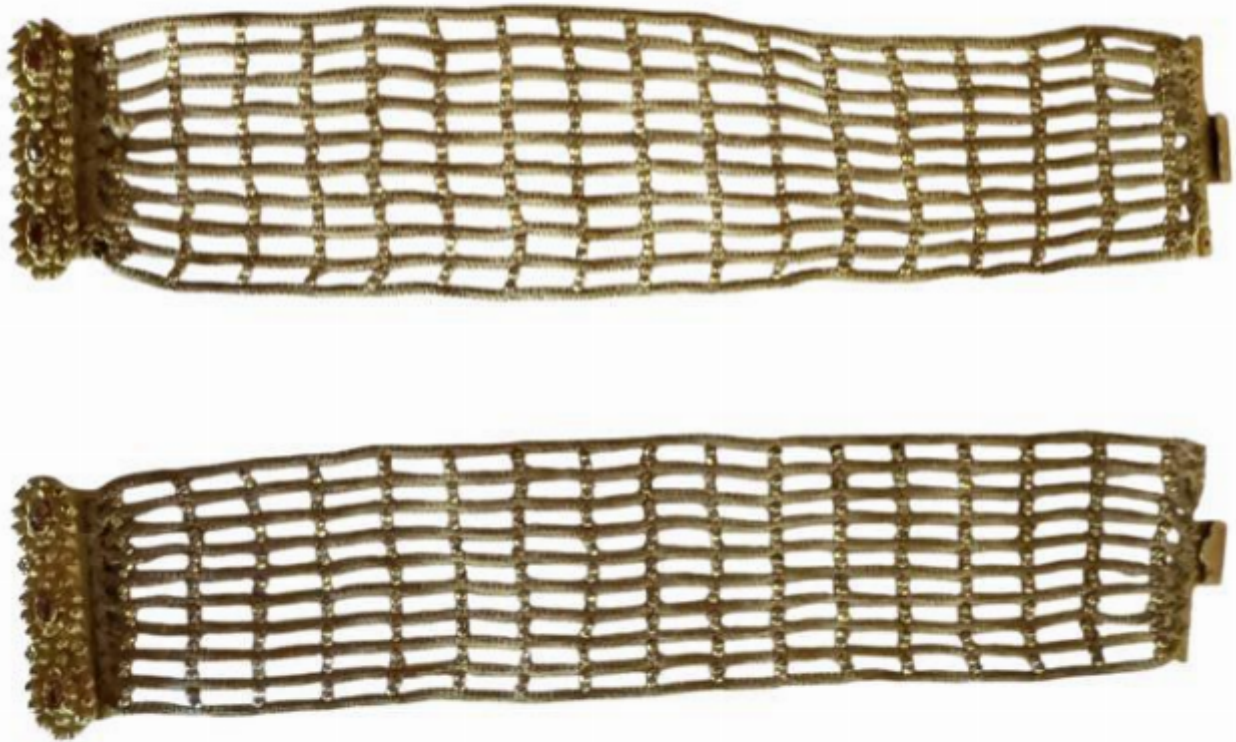


Pair of 18th century pinchbeck gold bracelets

Sold



REF: 6860

Height: 18 cm (7.1")

Width: 4 cm (1.6")

Description

A rare surviving pair of 18th century pinchbeck, pink paste, and silk mesh bracelets, circa 1760

Pinchbeck is a type of alloy invented in the early 18th century by Christopher Pinchbeck, an English watchmaker. Composed primarily of copper and zinc, it closely resembles gold in appearance, making it a popular substitute in inexpensive jewellery and decorative objects. Pinchbeck was especially valued during a time when gold was heavily taxed and restricted to the upper class.

Unlike gold-plated items, Pinchbeck does not easily tarnish and retains its bright, golden lustre. Its popularity declined in the 19th century with the rise of cheaper electroplating techniques, but it remains a historically significant example of early imitation gold alloys.